

Dispersion of solids and liquids

EKATO DISSOLVER CERAMIC

Longer service life, no product contamination, reduced operating and maintenance costs

Industries

- Specialty chemicals
- Formulated consumer products
- Pharmaceutical products and cosmetics

Applications

- Building materials
- Paints and pigments
- Composites
- Electronic base materials
- Toothpaste
- Inks
- Sealants

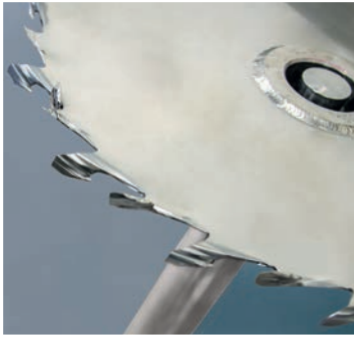
General features

- Substantially increased lifetime due to increased hardness - compared to metallic and coated materials
- Monolithic design, no coating
- No loss of strength at high temperature
- Excellent chemical resistance
- Same process performance as standard Dissolver designs (metallic)

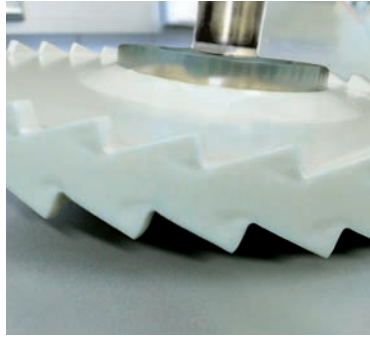
Benefits

- Cost-effective due to increased lifetime and decreased downtime
- Reduced maintenance costs
- No metallic contamination of the product
- Higher yields – higher solids concentrations possible
- High operational reliability, low failure risk



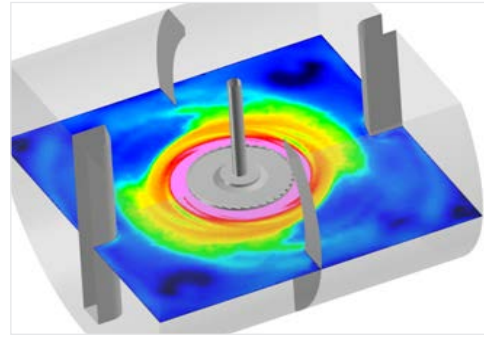


Dissolver stainless steel
(after 20 hours)



Dissolver ceramic
(after 480 hours)

Comparison of wear under identical conditions



CFD simulation
of the local energy dissipation rate

EKATO DISSOLVER CERAMIC

The EKATO DISSOLVER Ceramic is a monolithic design made of a composite ceramic especially suited for abrasive products. Due to the substantially increased hardness of the material an increased lifetime of at least 20 times can be expected. This decreases maintenance and capital costs at the same time increasing the availability of the equipment. Apart from the extremely long service life no metallic impurities can enter the product. Ceramics are characterized by their very good chemical and thermal resistance, they can be applied up to very high temperatures ($> 500\text{ }^{\circ}\text{C}$).

300 mm EKATO DISSOLVER Ceramic

